



WELCOME TO COMTEL INDIA

We Are Tech Enthusiasts, Inventors And Problem Solvers
Dedicated To Turning Your Concepts Into Innovative
Digital Solutions



www.comtel-india.net



AUTOMOTIVE CRM



ABOUT CRM



ADMIN MODULE



EMPLOYEE MODULE



CUSTOMER MODULE



ABOUT AUTOMOTIVE CRM



THE IMPORTANCE OF HAVING A AUTOMOTIVE CRM

Customer Relationship Management systems can assist dealerships in managing leads along the sales funnel by offering tools for lead management and prospect tracking. CRM software allows sales reps to keep track of their interactions with prospective clients, plan follow-ups, and rank leads according to conversion probability.

An Automotive CRM helps dealerships build strong relationships with customers by storing their contact information, purchase history, and communication records. This enables personalized interactions, leading to increased customer loyalty and retention.

MODULES



DASHBOARD



ADMIN



COMPANIES



BRANCHES



DEPARTMENT



DESIGNATION



EMPLOYEE



EMPLOYEE DETAILS



EMPLOYEE RIGHTS



CUSTOMERS



CUSTOMER DETAILS



ENQUIRES

ADMIN MODULES



Permits the administrator to oversee the CRM system's users. Assigning roles and permissions, controlling user access to various modules and features, and creating, modifying, and deleting user accounts are all included in this.

These admin module provide the necessary tools and controls for administrators to manage the Automotive CRM system, ensuring data accuracy, security, and compliance, while also enabling customization and automation to meet specific business needs.

ADMIN MODULES FEATURES



DASHBOARD



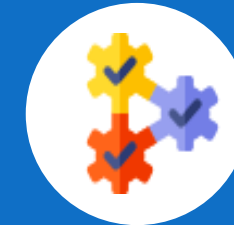
CREATE/EDIT ADMIN



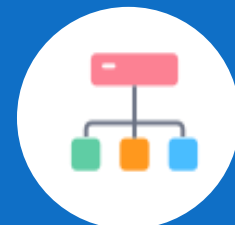
MANUFACTURES
DETAILS



BRANCH



PRODUCT DETAILS



DEPARTMENT



USER MANAGEMENT



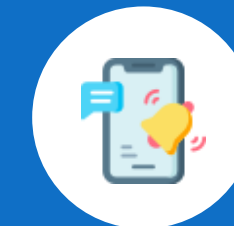
DATA IMPORT /
EXPORT



REPORTING



SECURITY



NOTIFICATION



BACKUP & RECOVERY



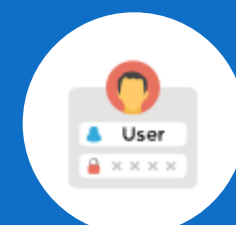
DESIGNATION



EMPLOYEE DETAILS



EMPLOYEE LOGIN
DETAILS



CUSTOMER DETAILS



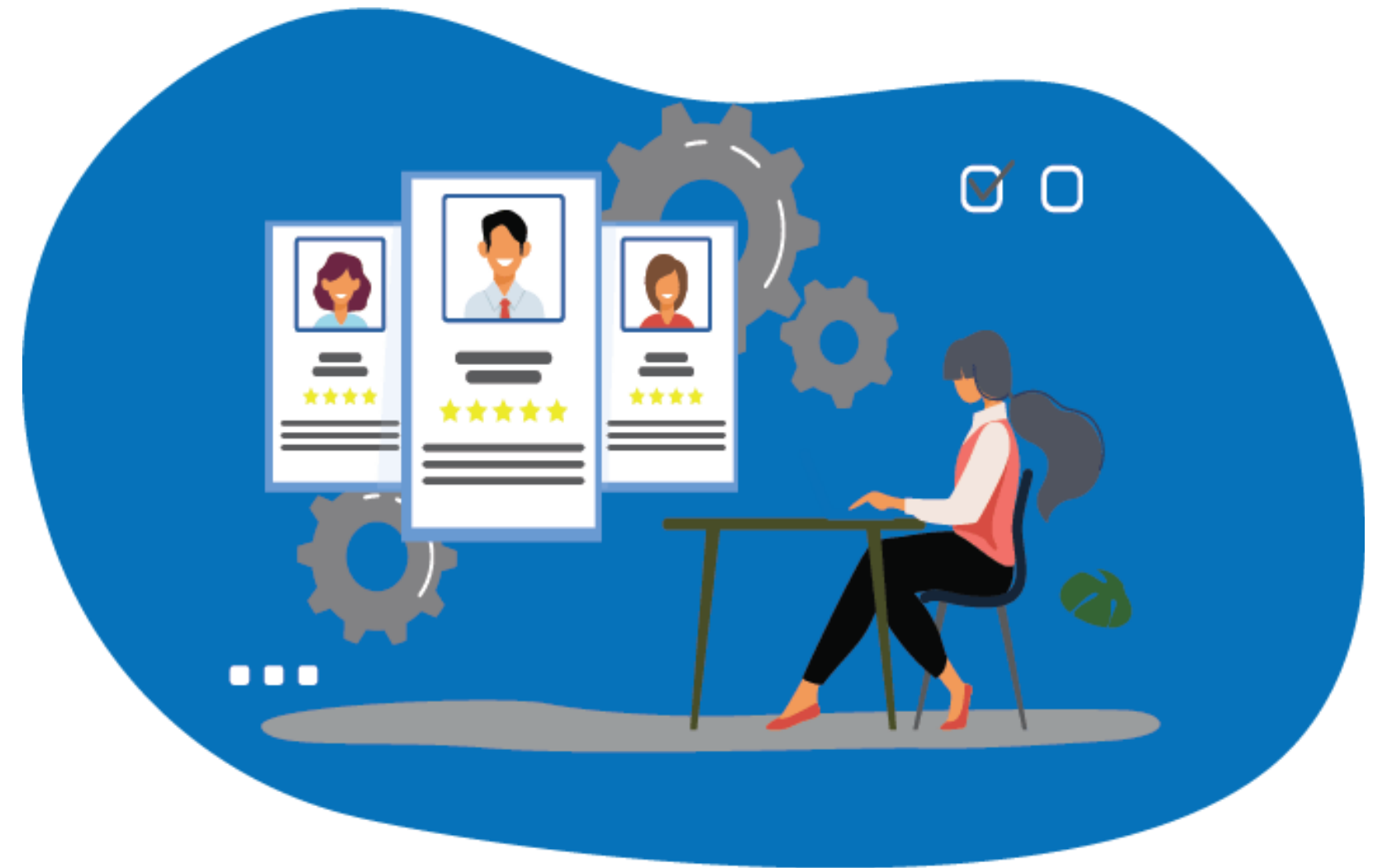
LICENSE DETAILS



ENQUIRY

EMPLOYEE MODULES

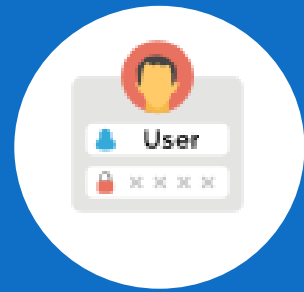
An automotive CRM's personnel module is an essential part that aids in managing and organizing employee information, jobs, and duties inside a dealership. An example of an employee module in an automotive CRM Store and manage employee contact information, job titles, roles, and responsibilities.



EMPLOYEE MODULE FEATURES



EMPLOYEE



EMPLOYEE DETAILS



EMPLOYEE RIGHTS



CUSTOMER DETAILS

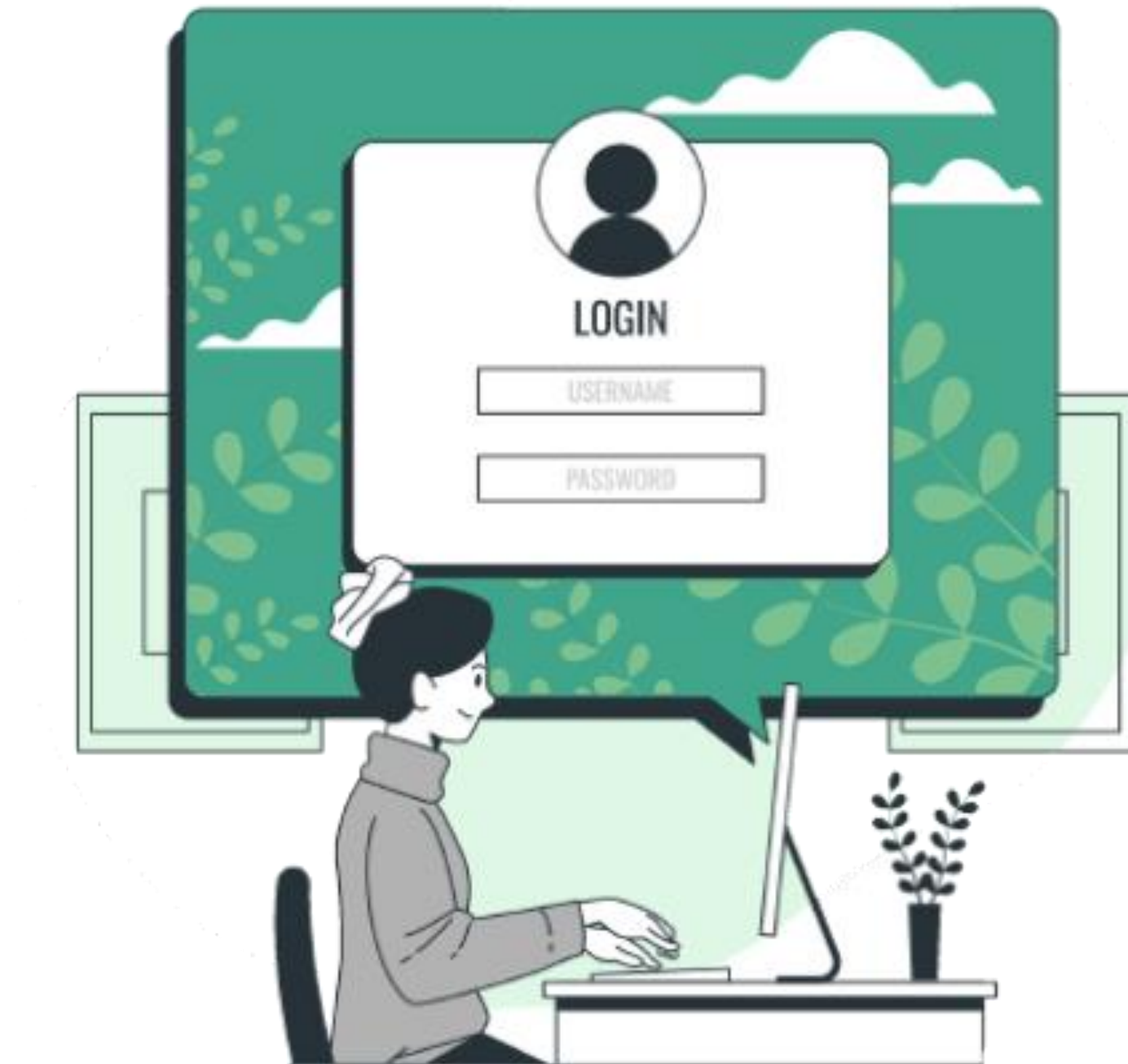


SECURITY



ENQUIRY

CUSTOMER MODULES



The administrator to oversee the CRM system's queries and requests for customer assistance. This entails managing client concerns, allocating support agents, and keeping track of support tickets.

CRM program. The precise specifications and demands of the company will determine the features and functionalities that are offered. Consumer logins must to be simple to use, safe, and compatible with a range of gadgets, including laptops, tablets, smartphones, and desktop computers.

CUSTOMER MODULE FEATURES



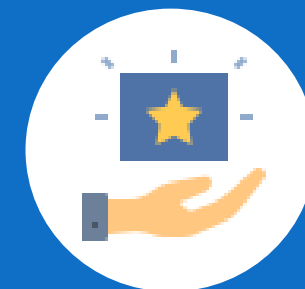
CUSTOEMR DETAILS



VIEW HISTORY



SPECIAL OFFERS



FEEDBACK AND REVIEWS



CONTACT US



389, Ground Floor, Purani Tehsil, Opp. Vishwakarma Chowk, Roorkee-247667 Distt. Haridwar Uttarakhand, India



(+91) 9897300229 / 9557281828



info@comtel-india.net



www.comtel-india.net

