



WELCOME TO COMTEL INDIA

we are tech enthusiasts, inventors and problem solvers
dedicated to turning your concepts into innovative
digital solutions



www.comtel-india.net



DATA CENTER FOR AUTOMATIC WEATHER STATION

Provide accurate and reliable weather data in remote, inaccessible or hazardous locations.

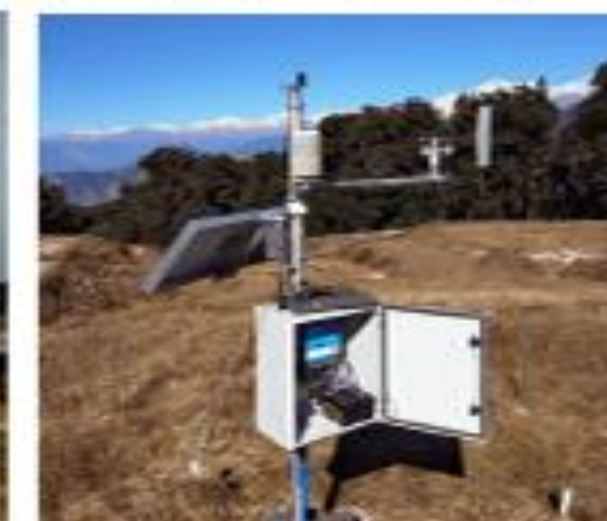
INTRODUCTION

ABOUT DATA CENTER

KEY FEATURES

ADMIN MODULE

USER MODULE



INTRODUCTION

A weather station is a facility, either on land or at sea, with instruments and equipment for measuring atmospheric conditions to provide weather forecast information and to study weather and climate.



ABOUT DATA CENTRE

A data center in an automatic weather station is a physical facility that houses the computing and networking equipment required to process, store, and distribute weather data. This equipment typically includes servers, networking devices, and data storage systems, as well as cooling and power systems to support the operation of the equipment.



KEY FEATURES OF DATA CENTRE

01

Data Centre is used to store the data into web server which is coming from the sensors.

02

It records the data which is coming into the form of csv file and convert it into database file.

03

Data can be used to analyse according to the need of customer.

04

It contains admin and user panel to perform various activity.

05

Admin can upload the device which contain various sensors and create the user account.



06

Sensor can be added according to the customer.

07

User can login into the server and see the data.

08

Data can be download into various format to analyse.

09

Graph into different format also Available.

10

Readings can be easily taken direct from the console display

ADMIN MODULE

In an Automatic Weather Station (AWS), an admin module typically refers to a software or hardware component that provides administrative access to the station's configuration, settings, and maintenance functions.

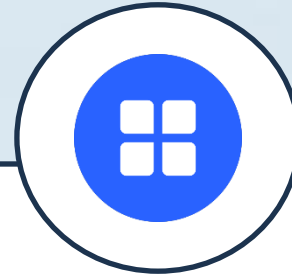


ADMIN MODULE FEATURES



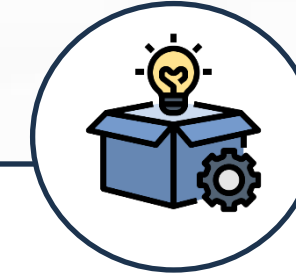
ADMIN

This form is used for login of administrator of the system. In this form admin enter their admin id and password if both are correct then administration panel or section will open otherwise if any of data is wrong it will get redirected back to the admin login page and again ask for correct admin id and password.



CATEGORIES

In this section, admin may create, update, view and change the status of categories by entering accurate information.



PRODUCT

In this section you can add, edit, upload product.

ADMIN MODULE FEATURES



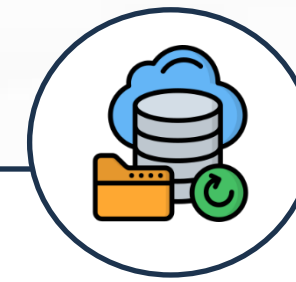
USER DETAILS

A product detail web page on an that presents the description of a specific product in view.



UPLOAD DATA

You can view details about the device, user data, installed apps, device security, and device kind and operating system.



DATA BACKUP

Data backup refers to the process of creating copies of data to protect against data loss or corruption

USER MODULE

A user module typically refers to a display unit or a terminal that provides a user-friendly interface to view and interact with the weather data collected by the station. The user module is often a separate unit from the rest of the AWS, allowing users to access and view the weather data from a convenient location, such as a office or a control room.



USER MODULE FEATURES



DASHBOARD

Dashboard is used to know the quick view hottest and raining places in a state .



USER DETAILS

Information that the user can see on their own device



MOBILE USE

Monitoring the atmospheric conditions and sending the data to a forecaster, display, or network for viewing on a mobile device.



DEVICE DETAILS

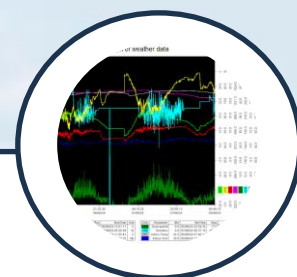
The device details in an automatic weather station are crucial for providing accurate and reliable weather data.

USER MODULE FEATURES



DEVICE DATA

Determine the accuracy and reliability of the weather data collected .



CHARTS

Charts in an automatic weather station are used to visualize and analyze the weather data collected by the station. wind speed, wind direction.



MAP

The location of the weather station and its surroundings are shown on a map feature.



ALARMS

Alarms are an essential feature in that alert users to severe weather conditions, equipment malfunctions, or other critical events.

OUR ESTEEMED CLIENTS



CONTACT US



ComTel India

Committed to Software Solutions



389, Ground Floor, Purani Tehsil, Opp.
Vishwakarma Chowk, Roorkee-247667 Distt.
Haridwar Uttarakhand, India



(+91) 9897300229 / 9557281828



info@comtel-india.net



www.comtel-india.net

